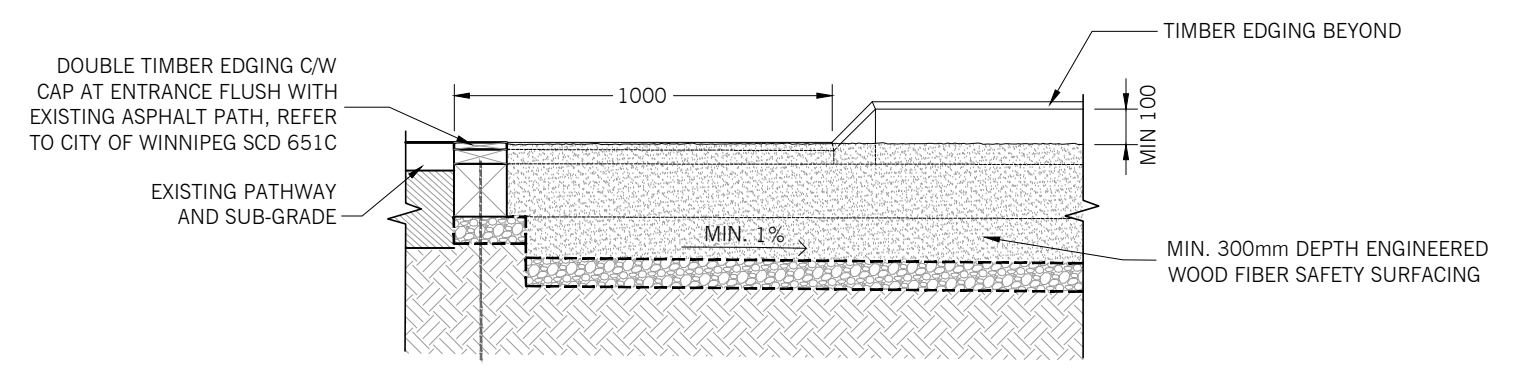


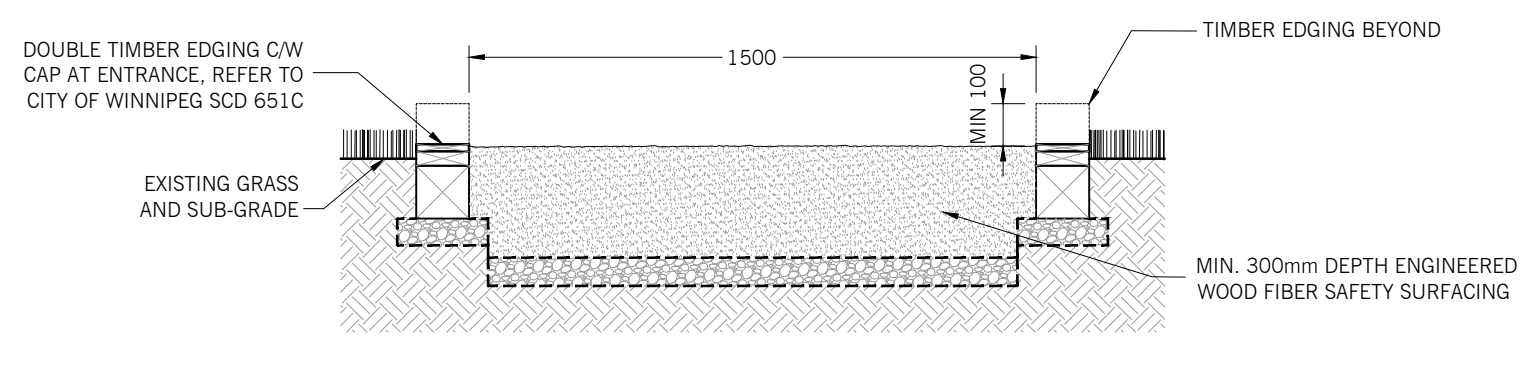
Drawings and specifications, as instruments of service are the property of the architect. The copyright in the same being reserved to him. No reproduction may be made without the permission of the architect and when made, must bear his name. All prints to be returned to the architect. The contractor shall verify dimensions and data noted herein with conditions on the site and is held responsible for reporting any discrepancy to the architect for adjustment. This drawing shall not be used for building purposes until countersigned by:

SUBCONSULTANTS

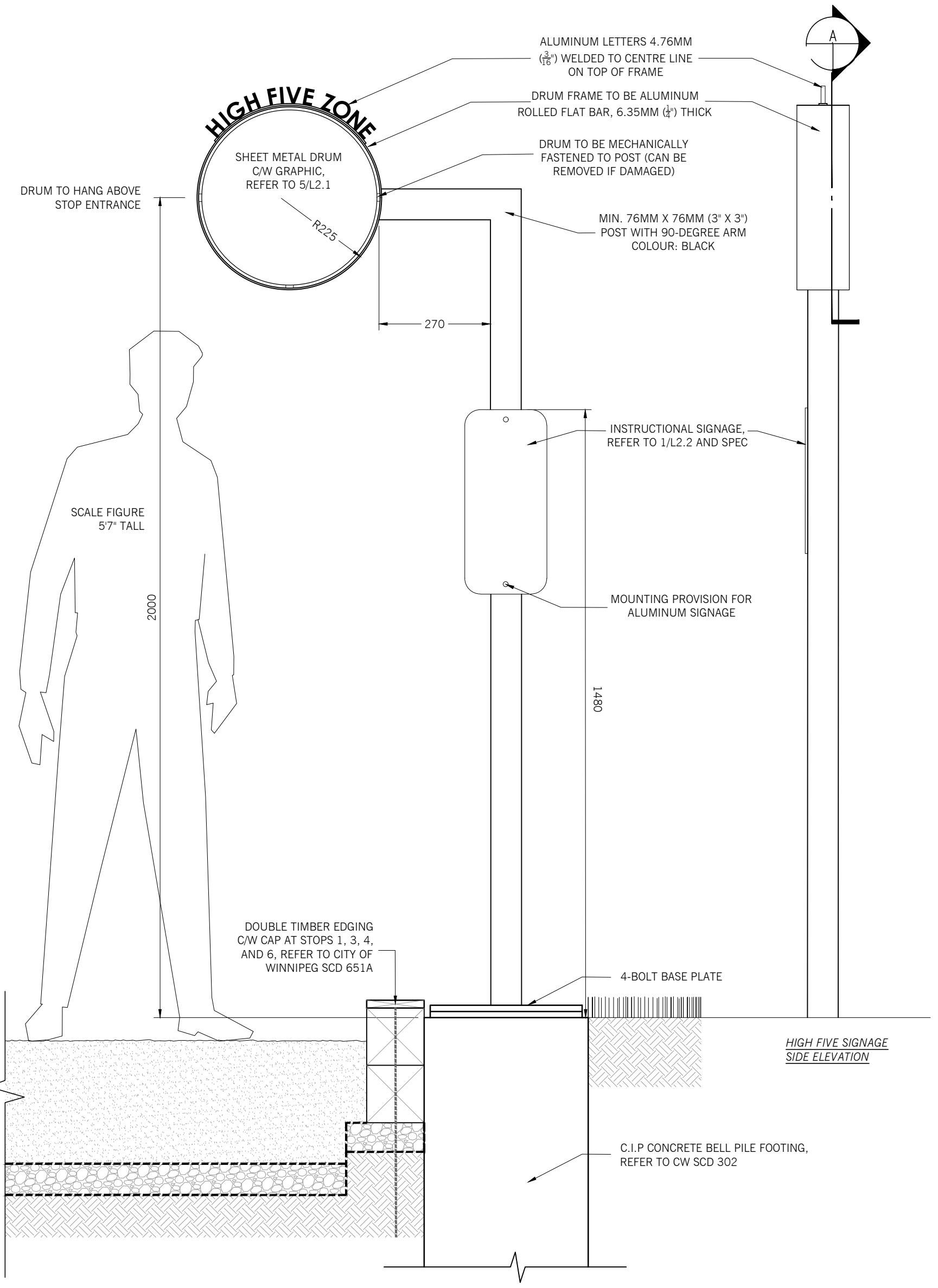
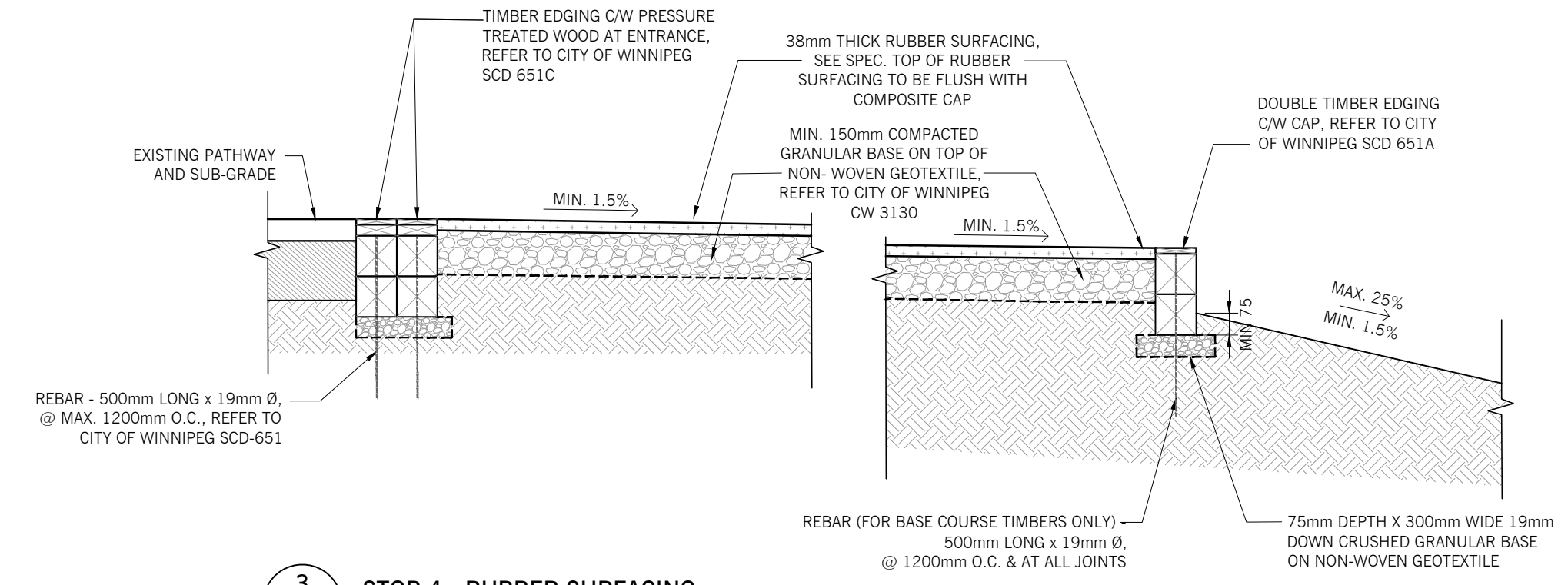
PROFESSIONAL'S SEAL



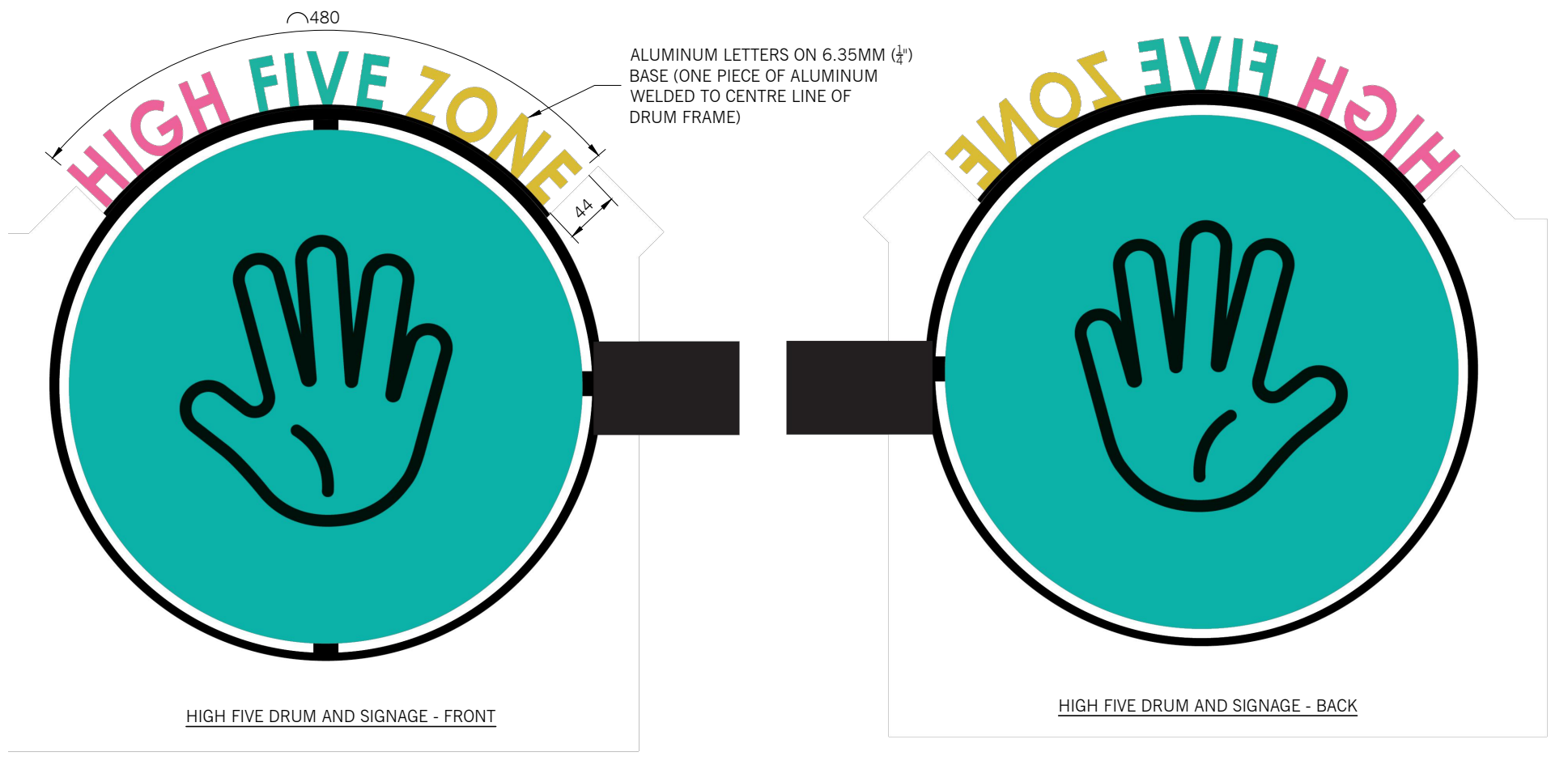
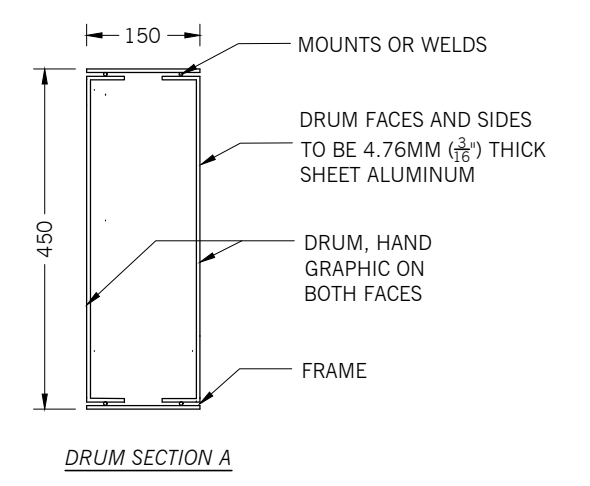
1 TYPICAL ACCESSIBLE ENTRANCE SECTION (STOP 1, 3, 6)  
L2.1 1:20



2 TYPICAL ACCESSIBLE ENTRANCE SECTION (STOP 1, 3, 6)  
L2.1 1:20

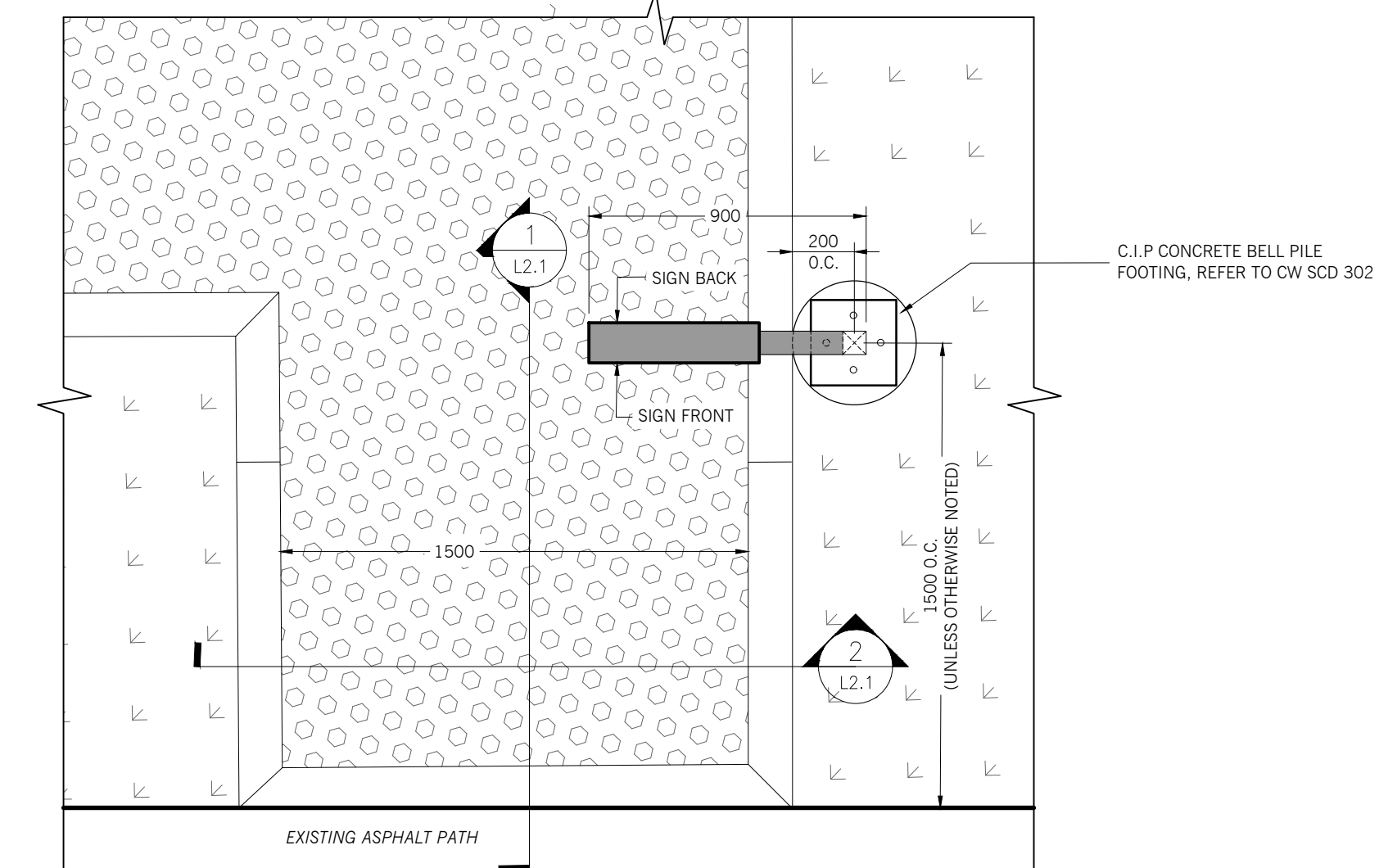


4 HIGH FIVE STOP SIGNAGE  
L2.1 1:10



5 HIGH FIVE STOP SIGNAGE  
L2.1 1:5

- NOTES**
- CONTRACTOR TO SUPPLY SHOP DRAWINGS FOR SIGNAGE AND FOOTING STAMPED BY A STRUCTURAL ENGINEER LICENSED TO PRACTICE IN THE PROVINCE OF MANITOBA.
  - POWDER COAT COLOURS:
    - DRUM AND "FIVE" LETTERING: R.O G-178 B-167 TO MATCH EQUIPMENT
    - POST, ARM AND FRAME: BLACK
    - "HIGH" LETTERING: TBD
    - "ZONE" LETTERING: TBD
  - A SAMPLE OR PROTOTYPE OF THE DRUM AND FRAME WILL BE PRODUCED AND TESTED FOR SOUND QUALITY BEFORE APPROVAL OF THE SHOP DRAWINGS TO PRODUCE SIX (6) UNITS.



ISS/REV	YY / MM / DD	DESCRIPTION	BY
02	24 / 11 / 08	ISSUED FOR CONSTRUCTION	CA
01	24 / 09 / 05	ISSUED FOR 65% REVIEW	CA

**ft3**  
Architecture  
Landscape  
Interior Design

CONSULTANT FILE NAME  
23692 STEPHEN JUBA PARK FITNESS TRAIL

CITY OF WINNIPEG  
PLANNING & URBAN DESIGN DIVISION  
PLANNING PROPERTY & DEVELOPMENT DEPARTMENT

**Winnipeg**

STEPHEN JUBA PARK FITNESS TRAIL

BD OPPORTUNITY No. 971-2024 SHEET 4 OF 6

LANDSCAPE SITE DETAILS		
DESIGN	DATE - Y / M / D	L2.1
KS/BG	24 / 11 / 08	
CHECKED	APPROVED	PROJECT No. 23.692
CA	CA	